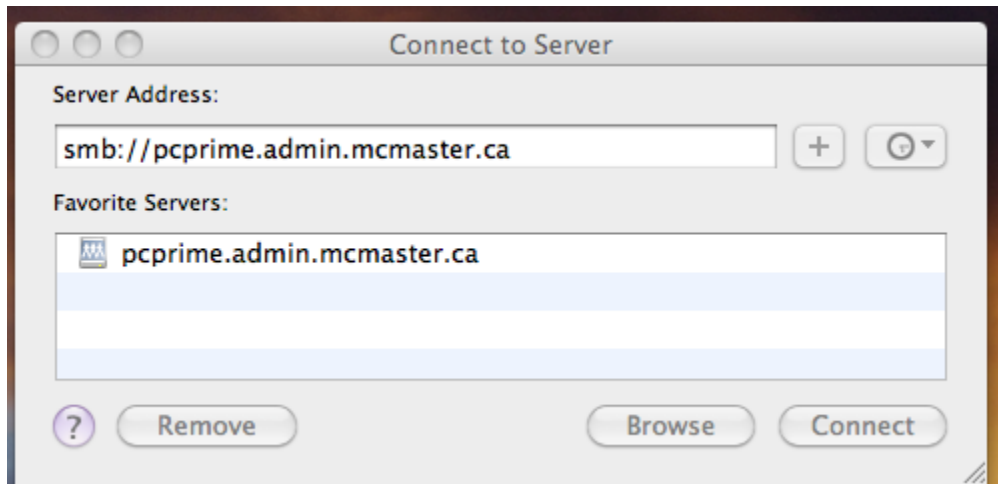
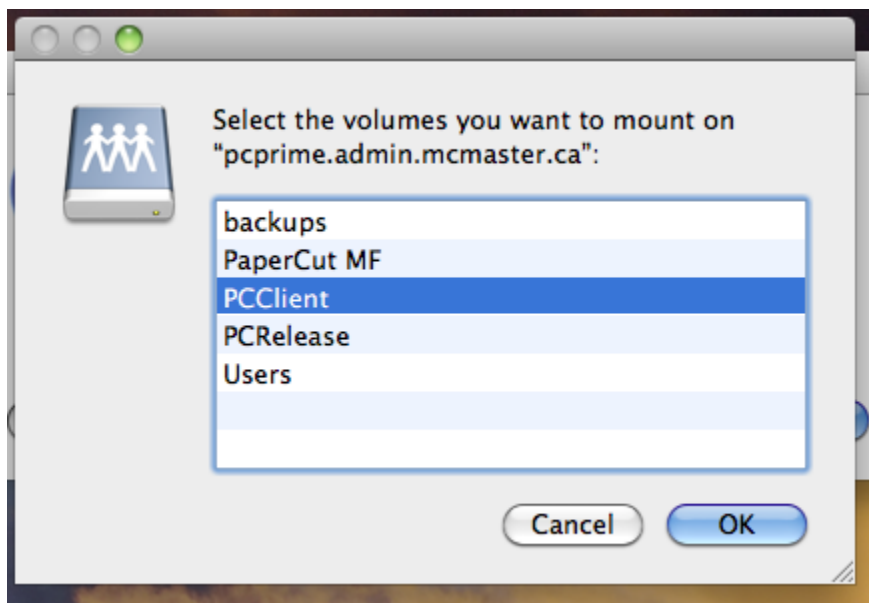


## Instructions for installing Printsmart client on a Mac laptop

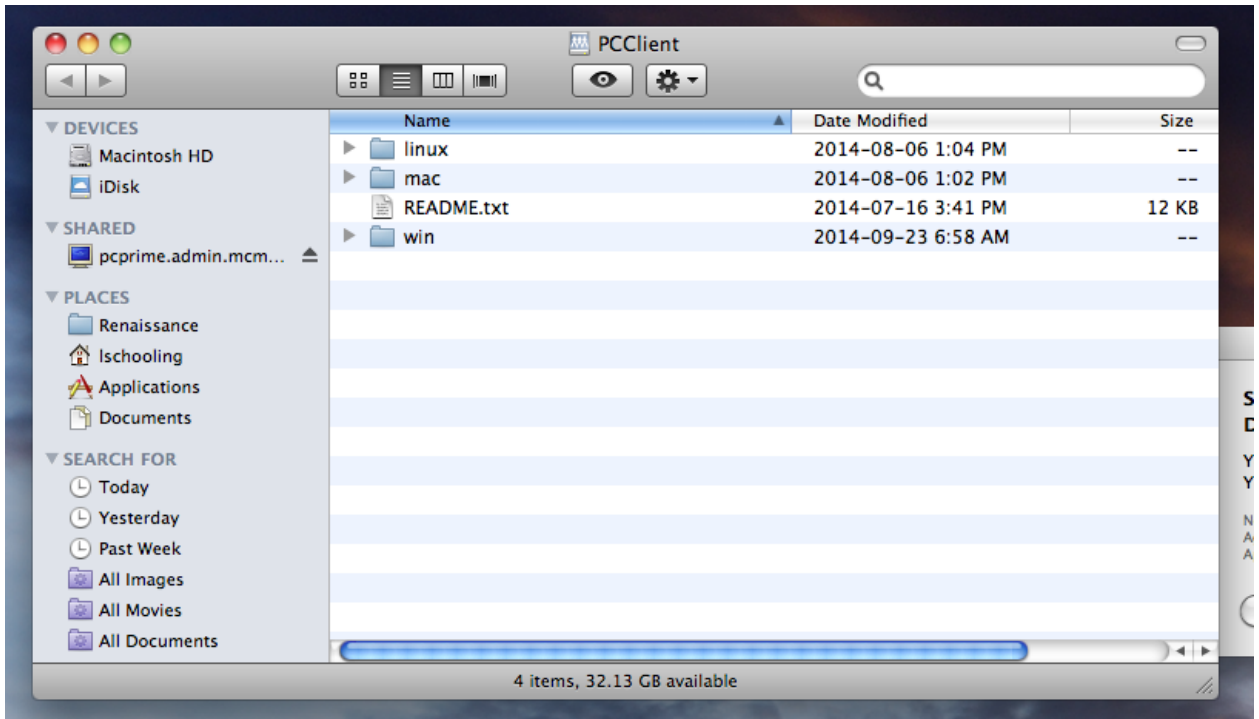
1. Open "Finder".  
Select **GO tab** at the top of the screen, then select **CONNECT TO SERVER**
2. Type in the information as displayed in the screen shot below.



3. The following screen will display. **If prompted for a password, use your MacID/password.** Select **PC CLIENT**, then **OK**

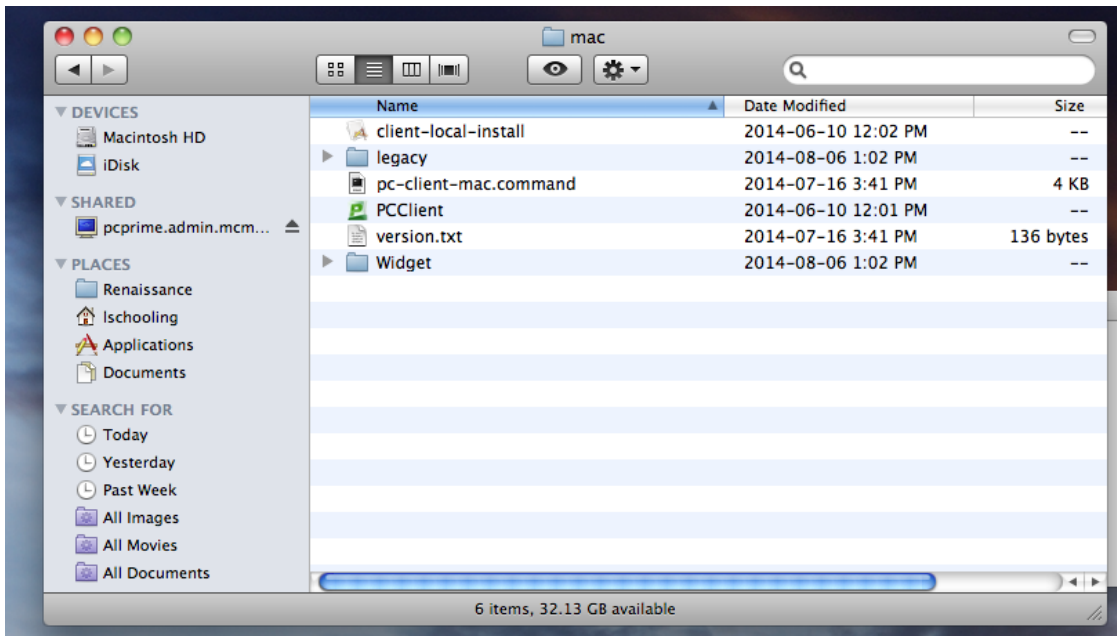


4. Open the **MAC** folder



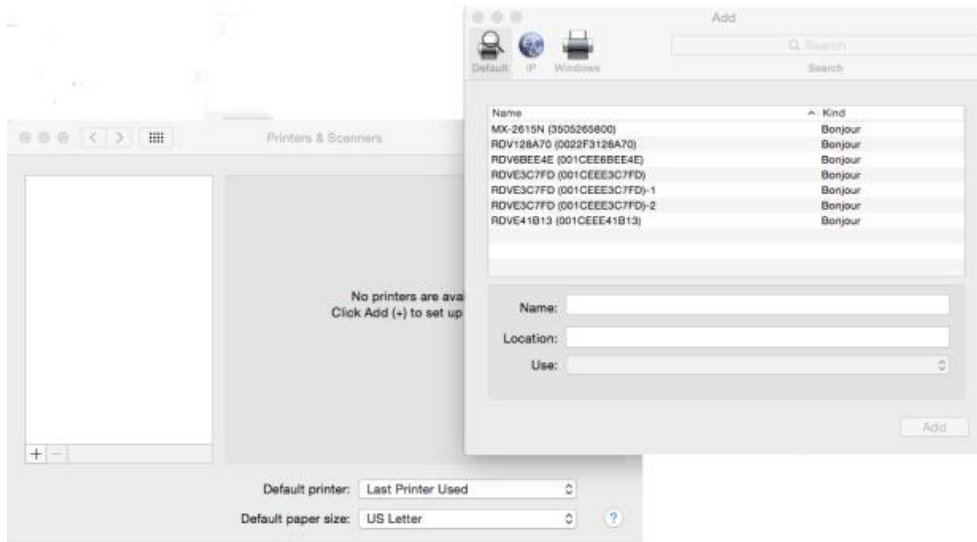
5. Double click **client-local-install**. If asked to Install PCClient into applications folder, select YES.

NOTE: Users who are running versions below 10.7 need to open the **legacy** folder and download the **client-local-install**

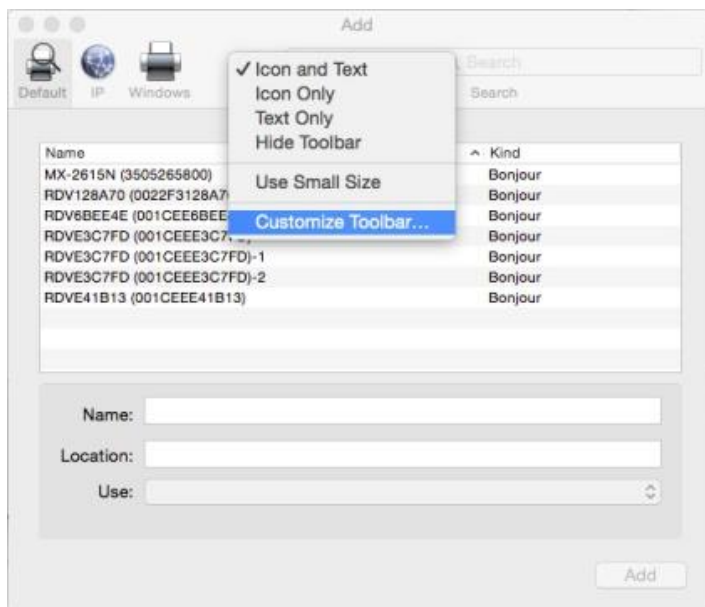


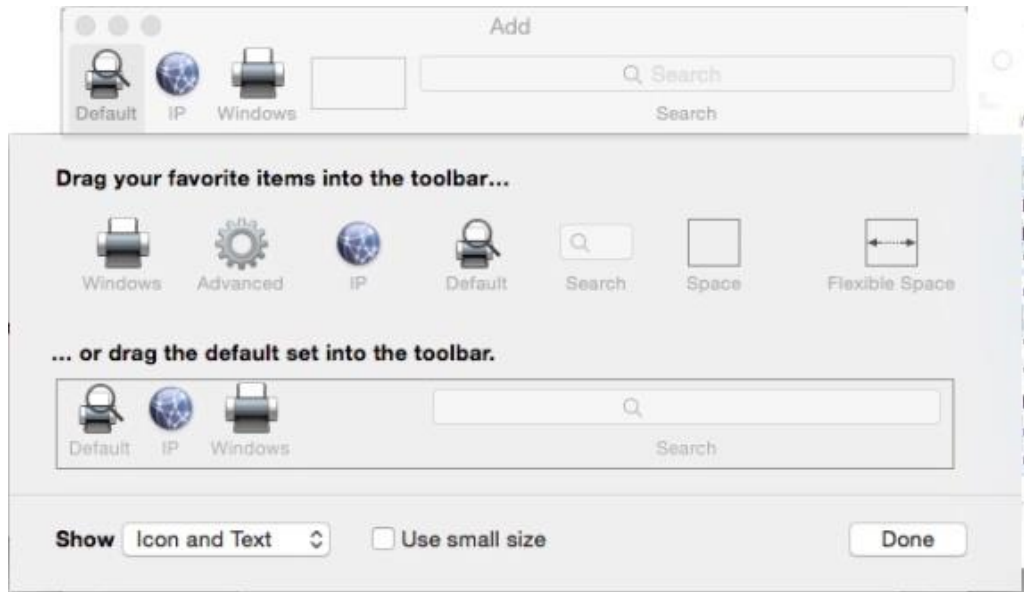
6. You now need to **ADD** a printer. If asked to Set up pcprime.mcmaster.ca, click on OK.

**Start by going to System Preferences and click on "Printers and Scanners". Next Click on the '+' to add a printer**

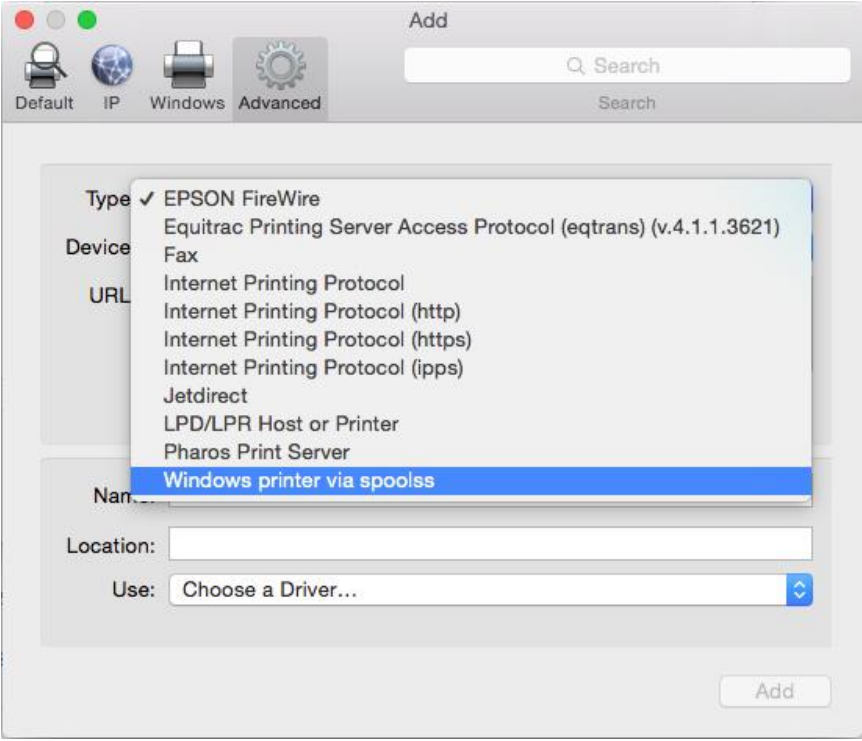


**If you don't have the "Advanced" button, Ctrl-Click the mouse in a blank area of the toolbar along the top, choose CUSTOMIZE toolbar, then drag the Advanced button to the toolbar**

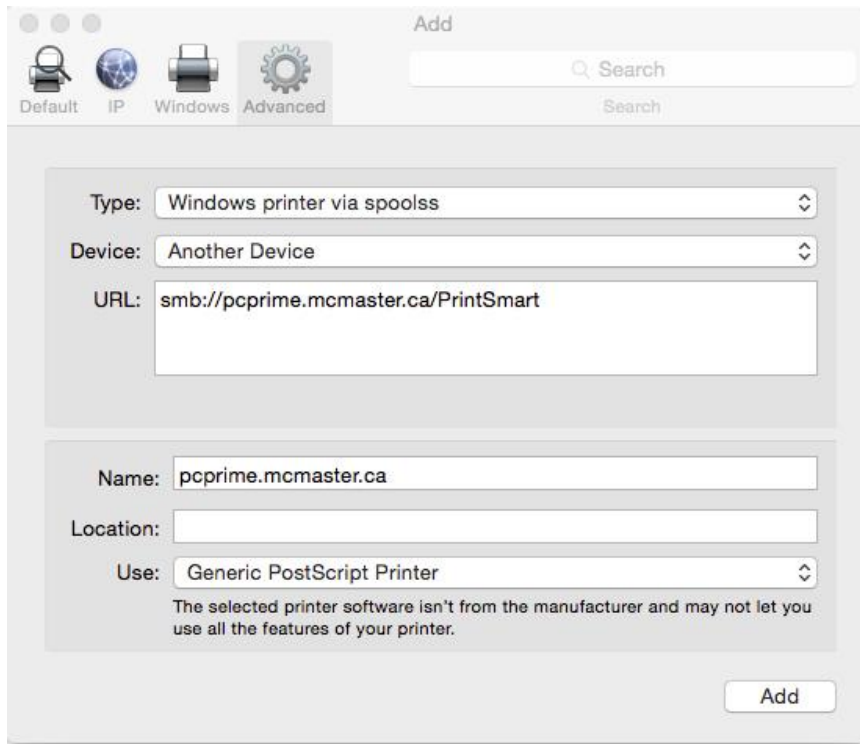




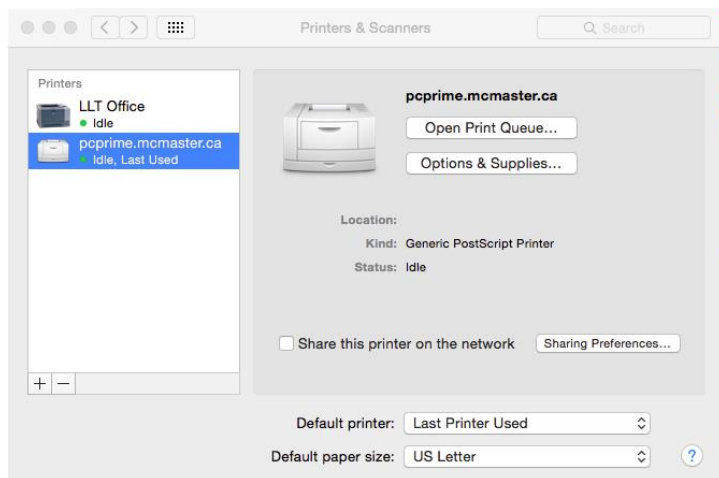
Once it is in place, click **ADVANCED**, then choose ``Windows printer via spoolss``



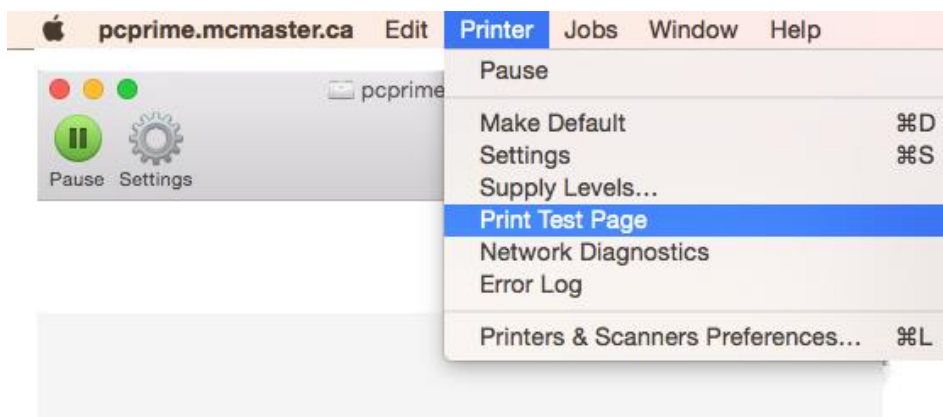
Enter the information below, then click "Add"



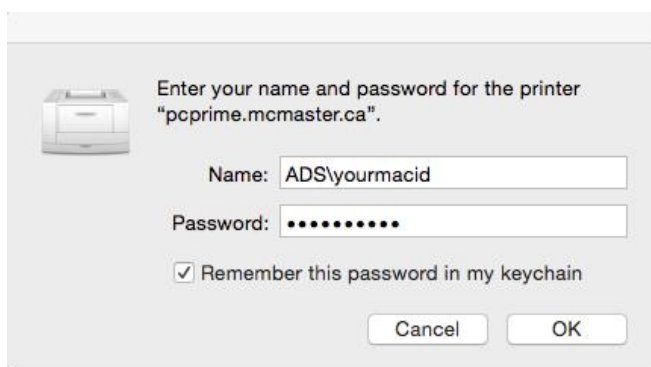
**Then Click Open Print Queue**



**Click: Print Test Page**



**You will get the following:**



**Key in your “MacID” and “Password”  
(Be sure to prefix your macid with ADS\ as shown in the example.)**

**If this is not successful, you may have input an incorrect MACID or password so you will have to remove the keychain entry for pcpriime (see below for instructions ).**

To remove the keychain entry, open Finder, go to Applications/Utilities/Keychain Access, and remove the entry for pcprime.

Then resend the test print page.

